

# MOODY BREWS



## HOT COFFEES

### AMERICANOS

#### CAFFÈ AMERICANO

Espresso shots topped with hot water create a light layer of crema culminating in this wonderfully rich cup with depth and nuance.

### BREWED COFFEES

#### CAFFÈ MISTO

A one-to-one combination of fresh-brewed coffee and steamed milk add up to one distinctly delicious coffee drink remarkably mixed.

#### BREWED ROAST COFFEE

BLONDE ROAST OR DARK ROAST

#### PIKE PLACE ROAST

A smooth, well-rounded blend of Latin American coffees with subtly rich flavors of chocolate and toasted nuts

### EXPRESSO

#### EXPRESSO SOLO

Our smooth signature Espresso Roast with rich flavor and caramelly sweetness is at the very heart of everything we do.

#### EXPRESSO DOPPIO

Our smooth signature Espresso Roast with rich flavor and caramelly sweetness is at the very heart of everything we do.

#### EXPRESSO CON PANNA

Espresso meets a dollop of whipped cream to enhance the rich and caramelly flavors of a straight-up shot.

GRANDE(16oz)

\$3.45

\$3.45

\$2.80

\$2.80

\$2.65

\$2.80

\$3.30

### CAPPUCCINOS

#### CAPPUCCINO

Dark, rich espresso lies in wait under a smoothed and stretched layer of thick milk foam.

### LATTES

#### CAFFÈ LATTE

Our dark, rich espresso balanced with steamed milk and a light layer of foam. A perfect milk-forward warm-up. Add a Flavored Syrup for \$0.75.

#### CAFFÈ MOCHA

Our rich, full-bodied espresso combined with bittersweet mocha sauce and steamed milk, then topped with sweetened whipped cream.

#### CAFFÈ WHITE MOCHA

Our signature espresso meets white chocolate sauce and steamed milk, and then is finished off with sweetened whipped cream

GRANDE(16oz)

\$4.50

\$4.50

\$ 5.15

\$5.45

### MACCHIATOS

#### CARAMEL MACCHIATO

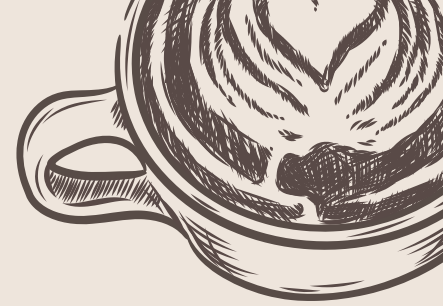
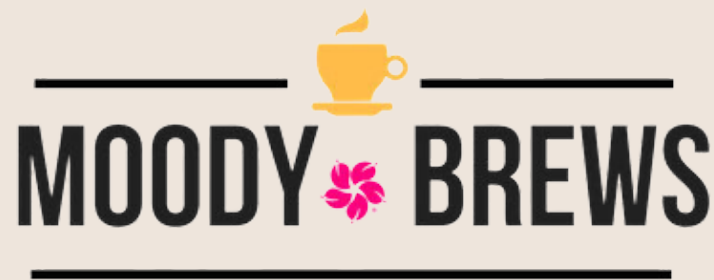
Our smooth signature Espresso Roast with rich flavor and caramelly sweetness is at the very heart of everything we do.

\$5.45

## MAKE IT YOURS

SYRUP FLAVOR \$0.65  
ESPRESSO SHOT \$0.75  
MILK SUBSTITUTE \$1.00





# COLD COFFEES

## ICED AMERICANO

### ICED CAFFÈ AMERICANO

Espresso shots topped with cold water produce a light layer of crema, then served over ice.

\$3.45

## ICED COFFEES | LATTES

### ICED COFFEE

Freshly brewed Starbucks® Iced Coffee Blend served chilled and sweetened over ice.

\$3.55

### ICED CAFFÈ LATTE

Our dark, rich espresso combined with milk and served over ice. Add a Flavored Syrup for \$0.75.

\$4.50

### ICED CAFFÈ MOCHA

Our rich, full-bodied espresso combined with bittersweet mocha sauce, milk and ice, then topped with sweetened whipped cream.

\$4.70

### ICED CAFFÈ WHITE MOCHA

Our signature espresso meets white chocolate sauce, milk and ice, and then is finished off with sweetened whipped cream.

\$5.30

## ICED MACCHIATOS

### ICED CARAMEL MACCHIATO

We combine our rich, full-bodied espresso with vanilla-flavored syrup, milk and ice, then top it off with a caramel drizzle.

\$5.45

## COFFEE/CRÈME FRAPPUCCINOS®

### COFFEE FRAPPUCCINO® BLENDED BEVERAGE

Coffee meets milk and ice in a blender for a rumble-and-tumble togetherness

\$4.80

### CARAMEL FRAPPUCCINO® BLENDED BEVERAGE

Caramel syrup meets coffee, milk and ice for a rendezvous in the blender, while whipped cream and buttery caramel sauce layer the love on top.

\$5.30

### MOCHA FRAPPUCCINO® BLENDED BEVERAGE

Mocha sauce, Frappuccino® Roast coffee, milk and ice all come together for a mocha flavor.

\$5.30

### WHITE MOCHA FRAPPUCCINO® BLENDED BEVERAGE

White chocolate Frappuccino® Roast coffee, milk and ice get together for what might be the best thing that happens to you all day.

\$5.30

### JAVA CHIP FRAPPUCCINO® BLENDED BEVERAGE

We blend mocha sauce and Frappuccino® chips with coffee, milk and ice, then top it off with whipped cream and a mocha drizzle to bring you endless java joy.

\$4.65

### VANILLA BEAN CRÈME FRAPPUCCINO®

This rich and creamy blend of vanilla bean, milk and ice topped with whipped cream takes va-va-vanilla flavor to another level.

\$5.15

## MAKE IT YOURS

SYRUP FLAVOR \$0.65  
ESPRESSO SHOT \$0.75  
MILK SUBSTITUTE \$1.00





## HOT DRINKS

### HOT CHOCOLATES

#### HOT CHOCOLATE

Steamed milk and mocha sauce topped with sweetened whipped cream and a chocolate-flavored drizzle.

#### WHITE HOT CHOCOLATE

A traditional hot chocolate beverage made with white chocolate sauce and steamed milk, topped with whipped cream.

### STEAMERS

#### CINNAMON DOLCE CRÈME

We combine freshly steamed milk and cinnamon dolce-flavored syrup, topped with sweetened whipped cream and a cinnamon dolce topping.

#### VANILLA CRÈME

A smooth, frothy vanilla-flavored luxury combined with freshly steamed milk

#### LITTLE STEAMER

Enjoy a warm cup of whole, 2%, fat-free, soy, almond or coconutmilk steamed for your sipping pleasure.

### HOT TEAS

#### CHAI TEA LATTE

Black tea infused with cinnamon, clove and other warming spices is combined with steamed milk and topped with foam.

#### MATCHA TEA LATTE

Smooth and creamy matcha sweetened just right and served with steamed milk.

#### TWINNINGS HOT TEA

Tea of your choice prepared with freshly brewed hot water.



## COLD DRINKS

### GRANDE (16 oz)

\$3.85

\$3.85

\$4.10

\$3.60

\$3.10

\$4.45

\$4.50

\$3.20

### GRANDE (16 oz)

### STARBUCKS REFRESHERS

#### KIWI STARFRUIT REFRESHER

Starfruit- and kiwi-flavored juice, water, and real kiwi fruit pieces shaken with ice. Instead of water, try it with lemonade.

\$4.20

#### MANGO DRAGONFRUIT REFRESHER

Crafted with a refreshing combination of sweet mango and dragonfruit flavors. Then hand-shaken with ice and a scoop of real diced dragonfruit. Instead of water, try it with lemonade.

\$4.20

#### STRAWBERRY AÇAÍ LEMONADE REFRESHER

Sweet strawberry flavors, passion fruit and açai notes balanced with the delightful zing of lemonade, caffeine from green coffee extract and served over ice.

\$4.20

#### VERY BERRY HIBISCUS LEMONADE REFRESHER

Fruit juice and whole blackberries balanced with the delightful zing of lemonade, caffeine from green coffee extract and served over ice.

\$4.20

### ICED COCONUTMILK DRINKS

#### STAR DRINK

Starfruit- and kiwi-flavored juice and real kiwi fruit pieces added to coconutmilk and shaken with ice.

\$5.20

#### DRAGON DRINK

Crafted with a refreshing combination of sweet mango and dragonfruit flavors—is handshaken with creamy coconutmilk, ice and a scoop of real diced dragonfruit. .

\$5.20

#### PINK DRINK

Our crisp, Strawberry Açai Refreshers® Beverage, with its accents of passion fruit, is combined with creamy coconutmilk.

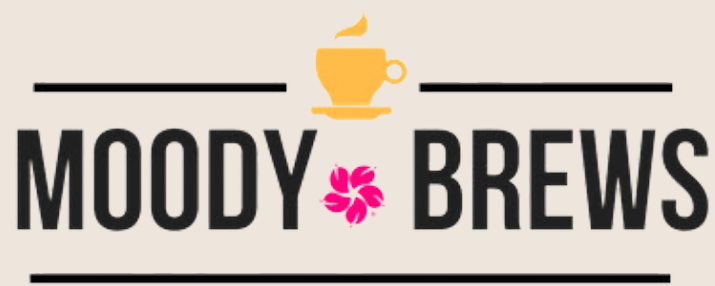
\$5.20

#### VIOLET DRINK

The sweet blackberries and tart hibiscus flavor of our Very Berry Hibiscus Starbucks Refreshers® beverage swirl together with creamy coconutmilk and ice

\$5.20





## OTHER BEVERAGES

### ICED TEA

GRANDE (16oz)

#### ICED CHAI TEA LATTE

Black tea infused with cinnamon, clove, and other warming spices are combined with milk and ice for the perfect balance of sweet and spicy.

\$4.45

#### ICED MATCHA TEA LATTE

Crafted with a refreshing combination of sweet mango and dragonfruit flavors. Then hand-shaken with ice and a scoop of real diced dragonfruit. Instead of water, try it with lemonade.

\$4.50

#### ICED BLACK TEA/LEMONADE

Our blend of hibiscus, lemongrass and apple, handshaken with ice, lemonade and, of course, passion.

\$2.75

#### ICED PASSION TANGO® TEA/LEMONADE

Black tea infused with cinnamon, clove, and other warming spices are combined with milk and ice for the perfect balance of sweet and spicy.

\$2.75

#### ICED GREEN TEA/LEMONADE

Crafted with a refreshing combination of sweet mango and dragonfruit flavors. Then hand-shaken with ice and a scoop of real diced dragonfruit. Instead of water, try it with lemonade.

\$2.75

#### MATCHA LEMONADE

Our finely ground Teavana® matcha green tea combined with crisp lemonade, then shaken with ice, creates a refreshingly sweet, delicious drink that's a delightfully vibrant, green-hue.

\$2.75

### BREAKFAST ITEMS

#### BREAKFAST SANDWICH

\$4.00

#### DELI SANDWICH

\$6.00

